

Giti



GitiSport^{S2}

German Engineering

Enjoy top-level performance without compromise! The German-engineered GitiSport S2 is designed to take premium vehicles to the next level, merging the finest control with wet-driving and braking strengths.

Rim size:

16- 21"

Aspect Ratio:

35- 55

Max. speed:

270 - 300 km/h

	Size	Speed Rating	Load Index
16	195/45R16	V	84
	205/45R16	W	87
	215/45R16	V	90
17	205/40R17	Y	84
	215/40R17	Y	87
	205/45R17	W	88
	215/45R17	Y	91
	225/45R17	Y	94
	235/45R17	Y	97
	245/45R17	W	99
18	255/35R18	Y	94
	225/40R18	Y	92
	235/40R18	Y	95
	245/40R18	Y	97
	225/45R18	Y	95
	235/45R18	Y	98
	245/45R18	Y	100
	255/45R18	Y	103
255/55R18	Y	109	
19	225/35R19	Y	88
	235/35R19	Y	91

	Size	Speed Rating	Load Index
19	245/35R19	Y	93
	255/35R19	Y	96
	225/40R19	Y	93
	235/40R19	Y	96
	245/40R19	Y	98
	255/40R19	Y	100
20	275/40R19	Y	105
	225/45R19	Y	96
	245/45R19	Y	102
	255/50R19	Y	107
	*235/55R19	W	105
20	255/55R19	Y	111
	245/35R20	Y	95
	255/35R20	Y	97
	*275/40R20	Y	106
	245/45R20	Y	103
	*255/45R20	W	105
	265/45R20	Y	104
275/45R20	Y	110	
21	295/35R21	Y	107



SMOOTH DRIVING

- Optimized pattern block geometry & sequence for low noise and smooth riding



- Strong center section for high speed stability and dry braking



ENHANCED GRIP

- Micro sipes provide suction effect for enhanced grip



- Balanced, stiff shoulders for precise steering and immediate response

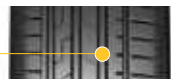


WET DRIVING STRENGTHS

- 3 Wide grooves and an additional groove on the outer section for exceptional water drainage



- Innovative new tread compound for extremely short braking distances - Wet Label A



- 14% improved aquaplaning resistance from previous generation

GitiSport^{S2}

* for SUV sizes